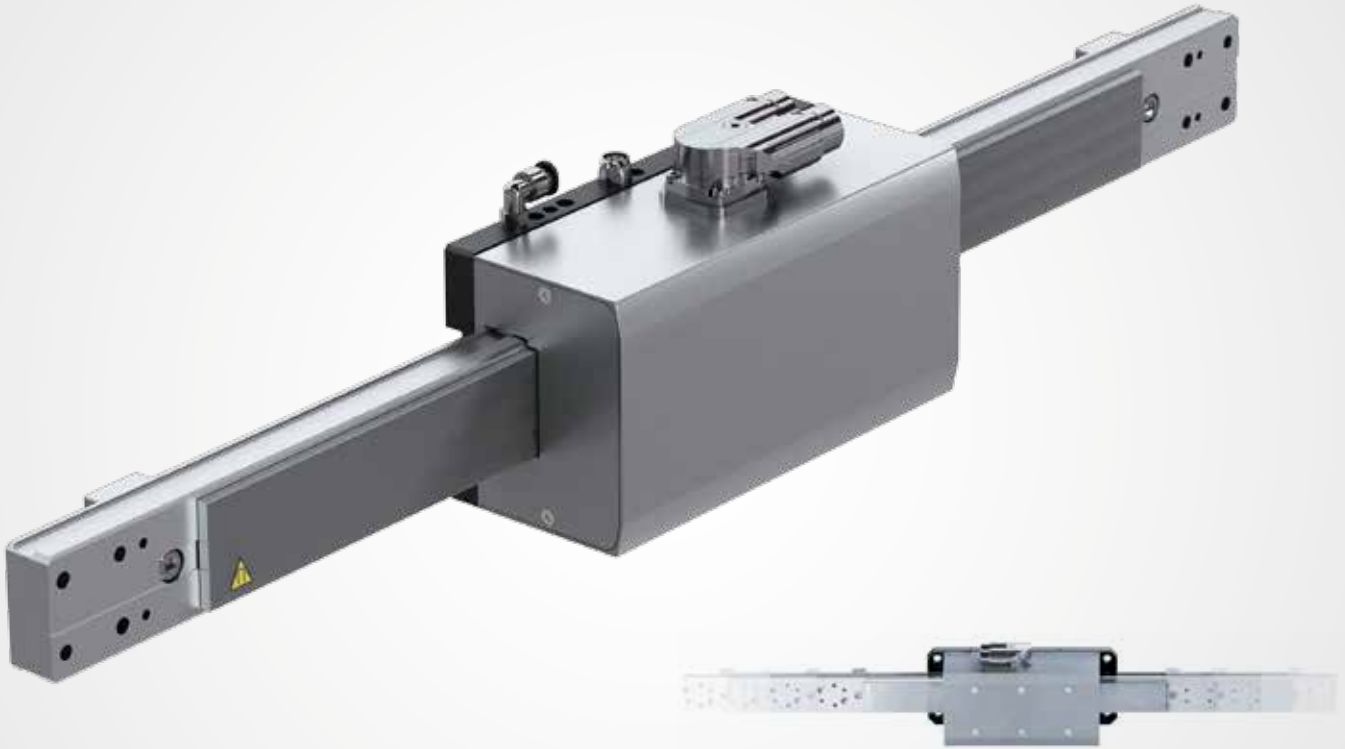


# HL

LINEAR MOTOR AXES | HL LINEAR AXIS



Various strokes up to 450 mm

## THE HIGHLY DYNAMIC LINEAR MOTOR AXIS HL

### OPTIONS AVAILABLE

- Tool connector; electrical and pneumatic supply is accessible
- Automatic grease pump for applications without maintenance



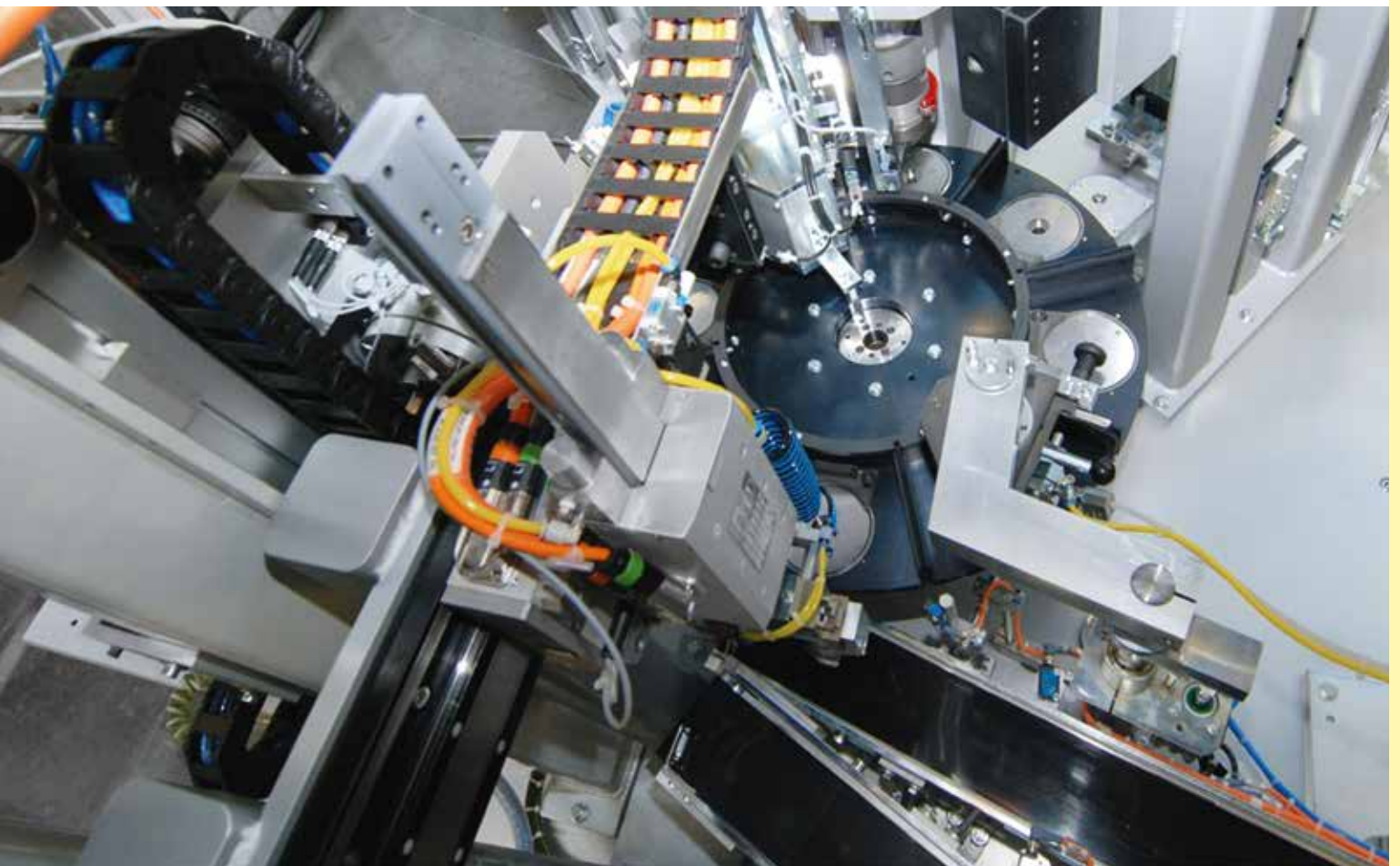
### WEISS APPLICATION SOFTWARE

Fast, easy and secure setting through its unique user software.



**W.A.S.**handling  
WEISS Application Software

OKU relies on the perfect combination of HN and HL axes for its ball bearing assembly cell. User-programmable linear motor axes are the ideal choice for extremely fast process movements and strict requirements in terms of both dynamic performance and precision.



The linear motor axis HL provides, without any doubt, the most modern drive technology which is highly integrated and ready to mount. Tight and precise recirculating ball bearings and an absolute measurement system as well as the automatic lubrication are all included in this product. The result: Rapid and harmonic movements, horizontal or vertical mounting and loading on the right or left side is possible.

---

## ADVANTAGES

- User programmable
- Extreme dynamics
- Monitored movements
- Long lifetime
- No maintenance cost
- Hygienic linear drive/no pneumatics
- Low energy costs
- Compact architecture
- Stiff mechanical assembling
- No oil / No gear
- Various sizes and shapes available
- Absolute encoder
- Light weight
- High power density
- No wearing parts



# HL 50

Weight	Steel base	Alu base
of rail, 0 stroke (kg):	0.7	0.7
of rail/100mm (kg):	0.3	0.3
of narrow motor (kg):	2.5	2.1
of wide motor (kg):	2.9	2.2
of brake (kg/piece):	0.4	0.4

## TECHNICAL DATA

Nom. force (N):	65
Peak force (N):	180
Max. speed (m/s):	4
Max. acceleration (m/s <sup>2</sup> ):	40
Nom. current (Arms):	2.4
Peak current (Arms):	6.0
Max. load capacity (kg):	6
Max. DC voltage (VDC):	800
System accuracy (µm/m):	10 incremental (Sin/Cos 1 Vpp)
System accuracy (µm/m):	5 absolute (BISS/C, SSI) optional
Repeatability (µm):	5 incremental (Sin/Cos 1 Vpp)
Repeatability (µm):	2 absolute (BISS/C, SSI) optional
Brake force per unit (N):	200
Available strokes (mm):	150, 300
Thermal sensor:	PTC

### STATIC LOAD



**200 Nm**



**300 Nm**



**50 Nm**



**200 N**



**500 N**

### DYNAMIC LOAD



**20 Nm**



**30 Nm**



**10 Nm**

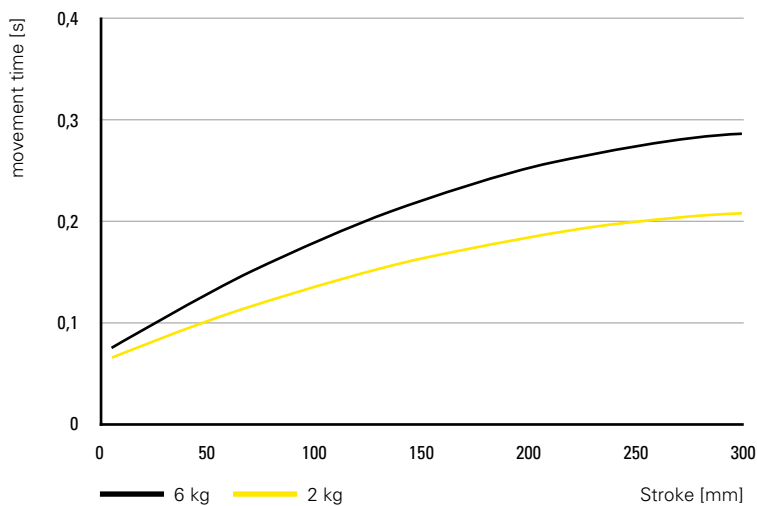


**60 N**

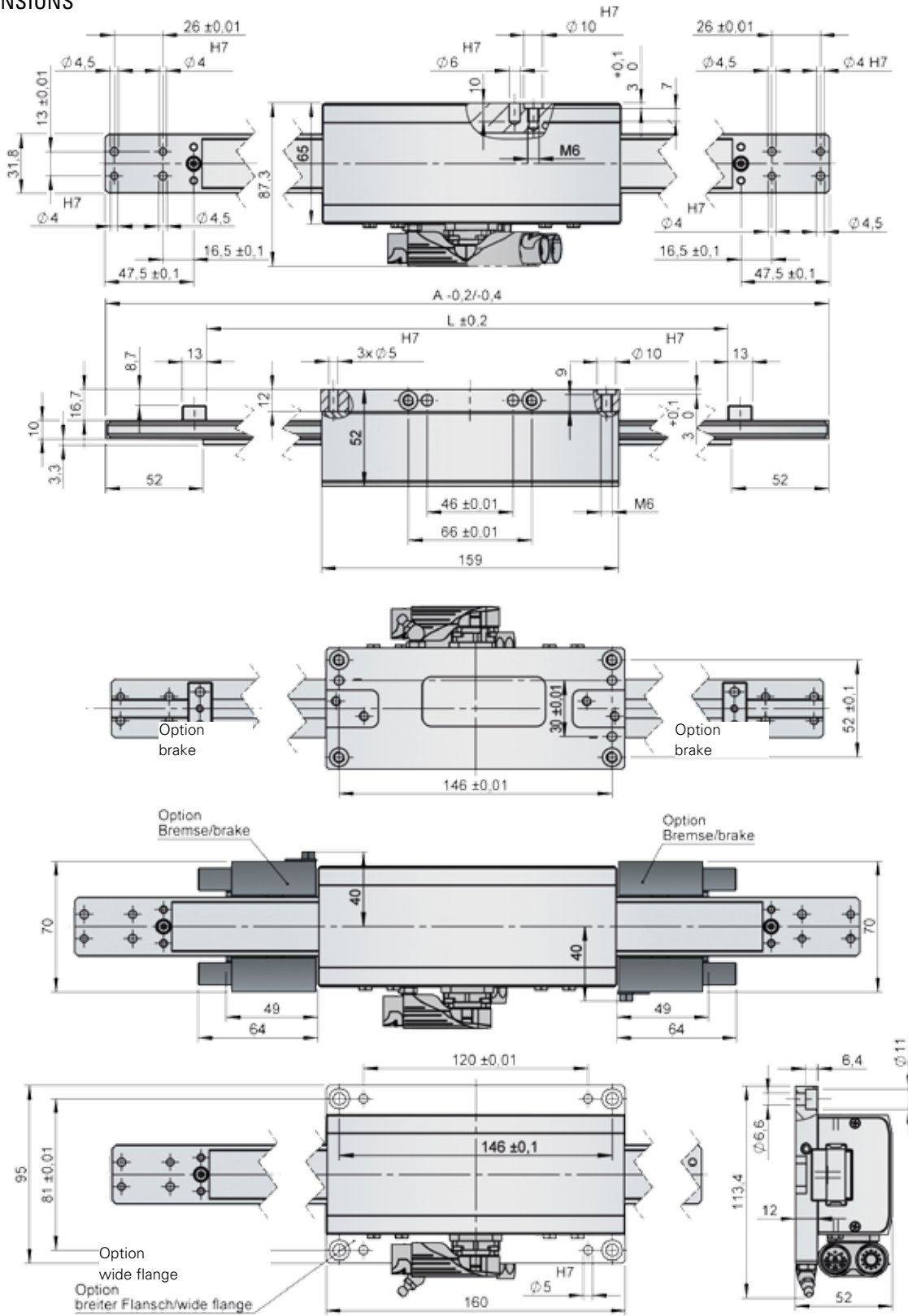


**90 N**

### TIMING DIAGRAM



DIMENSIONS



Standard strokes	L			A
	Number of brakes			
	0	1	2	
150	310	359	408	L+110
300	460	509	558	L+110



# HL 100

## TECHNICAL DATA

Nom. force (N):	150
Peak force (N):	380
Max. speed (m/s):	4
Max. acceleration (m/s <sup>2</sup> ):	40
Nom. current (Arms):	3.6
Peak current (Arms):	9.5
Max. load capacity (kg):	10
Max. DC voltage (VDC):	800
System accuracy (µm/m):	10 incremental (Sin/Cos 1 Vpp)
System accuracy (µm/m):	5 absolute (BISS/C, SSI) optional
Repeatability (µm):	5 incremental (Sin/Cos 1 Vpp)
Repeatability (µm):	2 absolute (BISS/C, SSI) optional
Brake force per unit (N):	200
Available strokes (mm):	150, 300, 450
Thermal sensor:	PTC

Weight	Steel base	Alu base
of rail, 0 stroke (kg):	1.8	1.8
of rail/100 mm (kg):	0.3	0.3
of narrow motor (kg):	4.4	3.6
of wide motor (kg):	5.1	4
of brake (kg/piece):	0.5	0.5

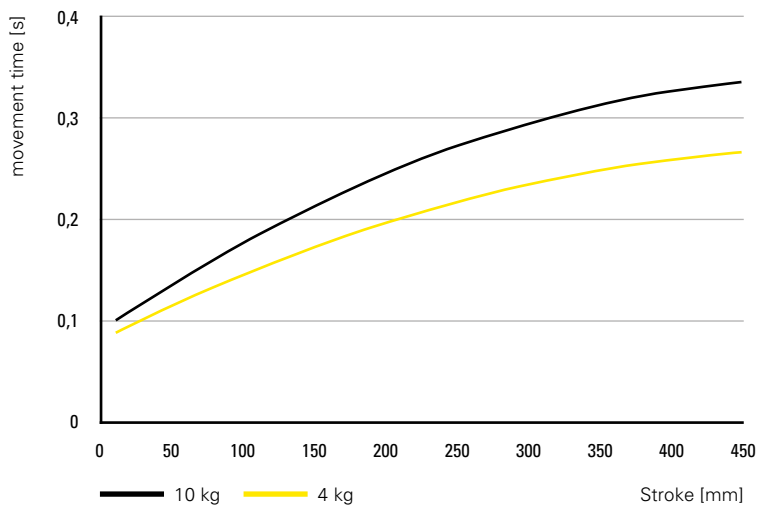
## STATIC LOAD



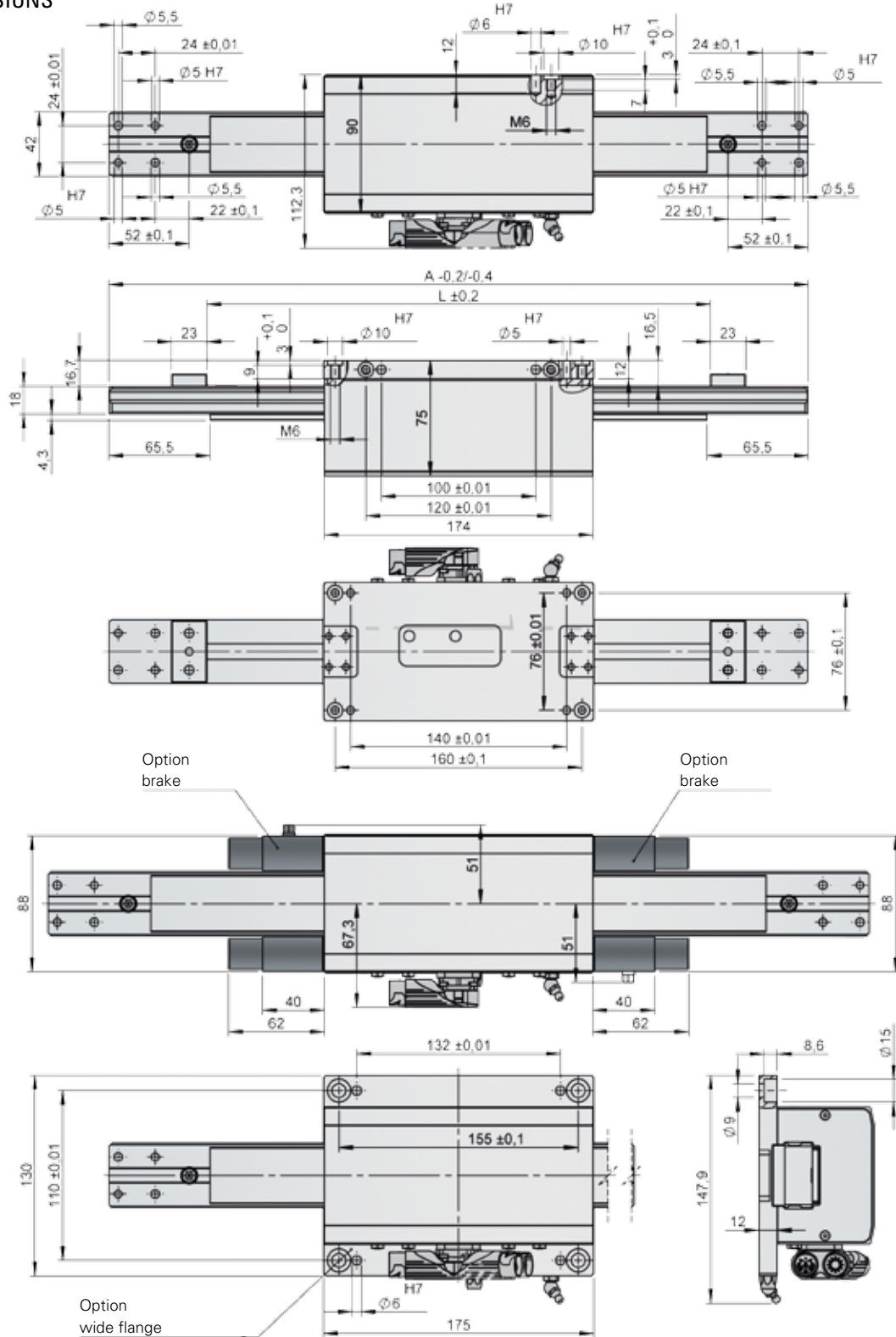
## DYNAMIC LOAD



## TIMING DIAGRAM



DIMENSIONS



Standard strokes	L			A
	Number of brakes			
	0	1	2	
150	325	365	405	L+129
300	475	515	555	L+129
450	625	665	705	L+129